



# WORLD TRADE CENTER® GIBRALTAR

THE SIGNATURE CORPORATE ADDRESS

## FIRST FLOOR



### Notes:

Floor plans are accurate at the time of print. Small details may change as construction progresses.

23rd November 2017.

CHOOSE QUALITY



WORLD TRADE CENTER® GIBRALTAR

THE SIGNATURE CORPORATE ADDRESS



# WORLD TRADE CENTER® GIBRALTAR

THE SIGNATURE CORPORATE ADDRESS

## SECOND FLOOR



### Notes:

Floor plans are accurate at the time of print. Small details may change as construction progresses.

23rd November 2017.

CHOOSE QUALITY



WORLD TRADE CENTER® GIBRALTAR  
THE SIGNATURE CORPORATE ADDRESS

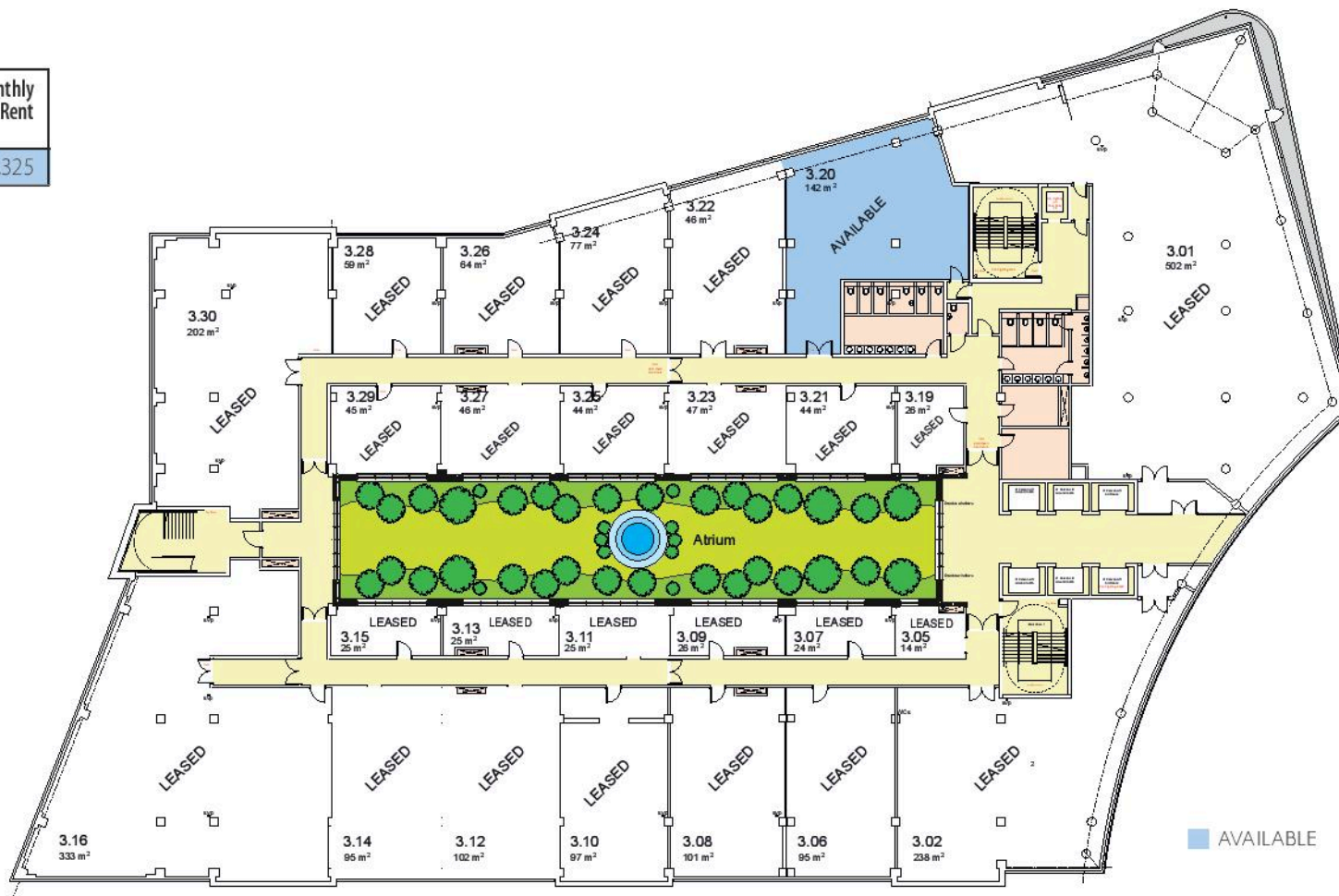


# WORLD TRADE CENTER® GIBRALTAR

THE SIGNATURE CORPORATE ADDRESS

## THIRD FLOOR

Unit Number	Unit Size m <sup>2</sup>	Total Annual Base Rent (ABR)	Monthly Rent
3.20	142	£63,900	£5,325



### Notes:

Floor plans are accurate at the time of print.  
13th March 2018.

CHOOSE QUALITY



WORLD TRADE CENTER® GIBRALTAR  
THE SIGNATURE CORPORATE ADDRESS

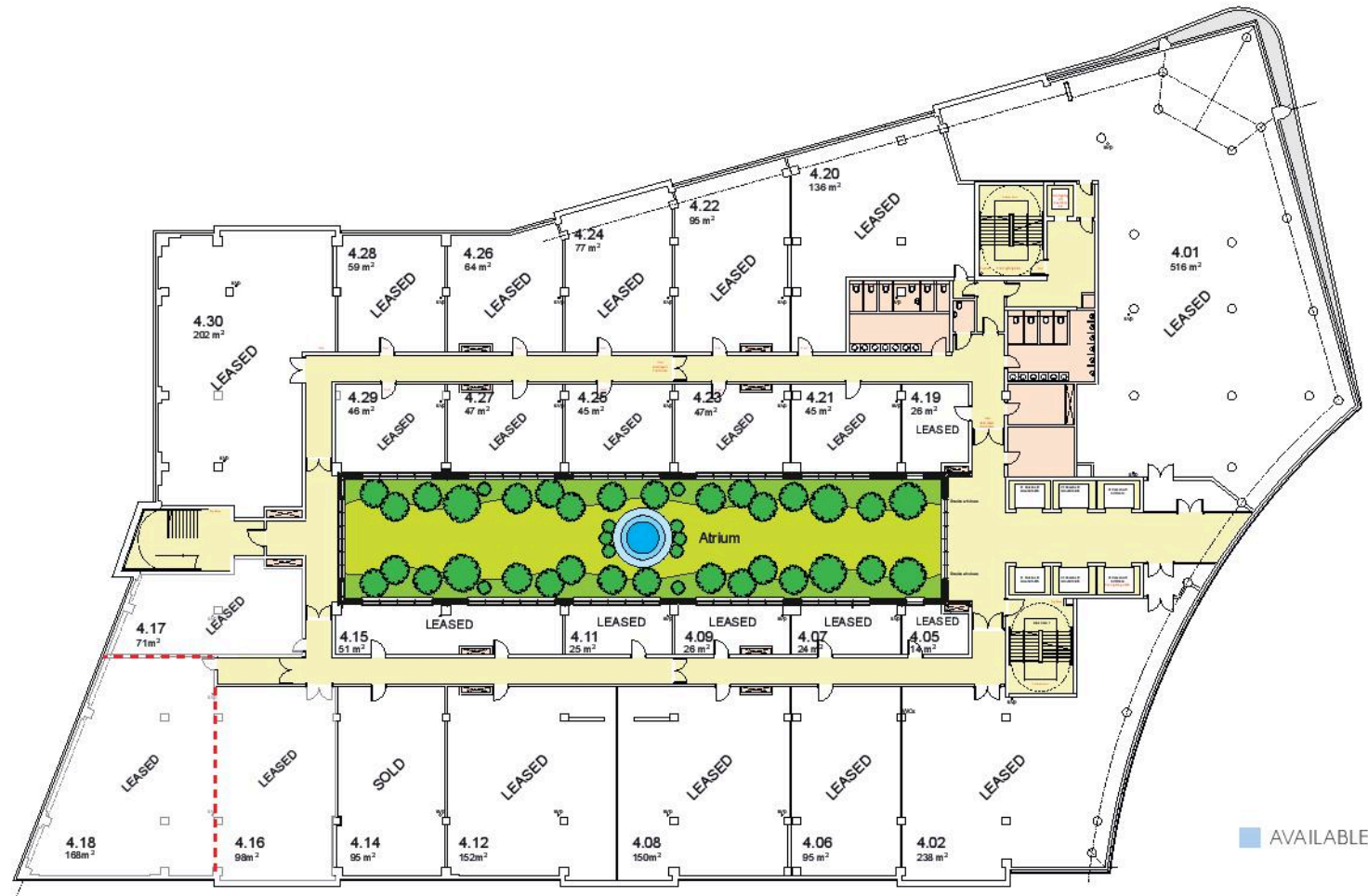




# WORLD TRADE CENTER® GIBRALTAR

THE SIGNATURE CORPORATE ADDRESS

## FOURTH FLOOR



### Notes:

Floor plans are accurate at the time of print. Small details may change as construction progresses.

6th December 2017.

CHOOSE QUALITY



WORLD TRADE CENTER® GIBRALTAR

THE SIGNATURE CORPORATE ADDRESS

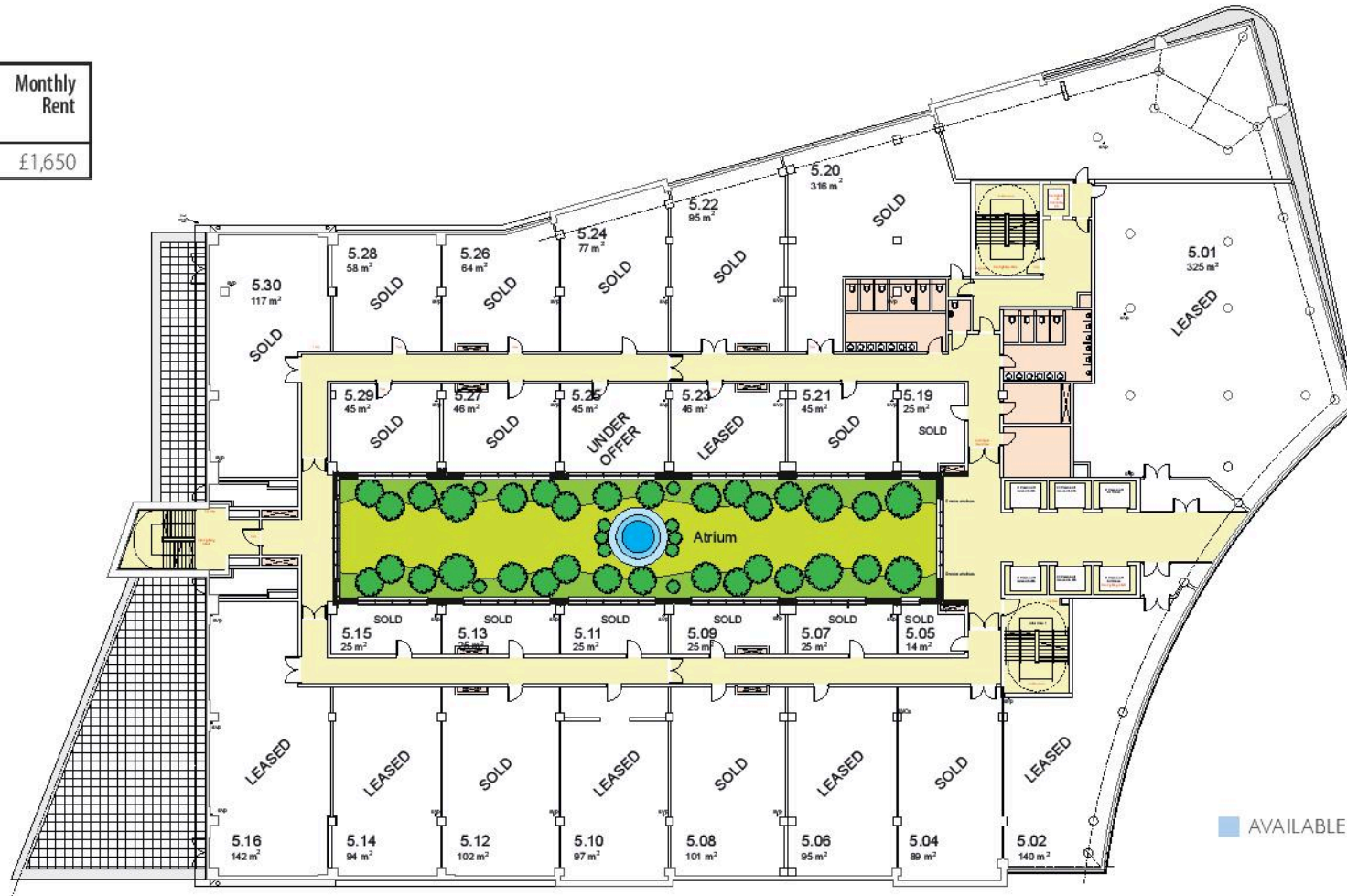


# WORLD TRADE CENTER® GIBRALTAR

THE SIGNATURE CORPORATE ADDRESS

## FIFTH FLOOR

Unit Number	Unit Size m <sup>2</sup>	Total Annual Base Rent (ABR)	Monthly Rent
5.25	44	£19,800	£1,650



### Notes:

Floor plans are accurate at the time of print.

15th February 2018.

CHOOSE QUALITY



WORLD TRADE CENTER® GIBRALTAR

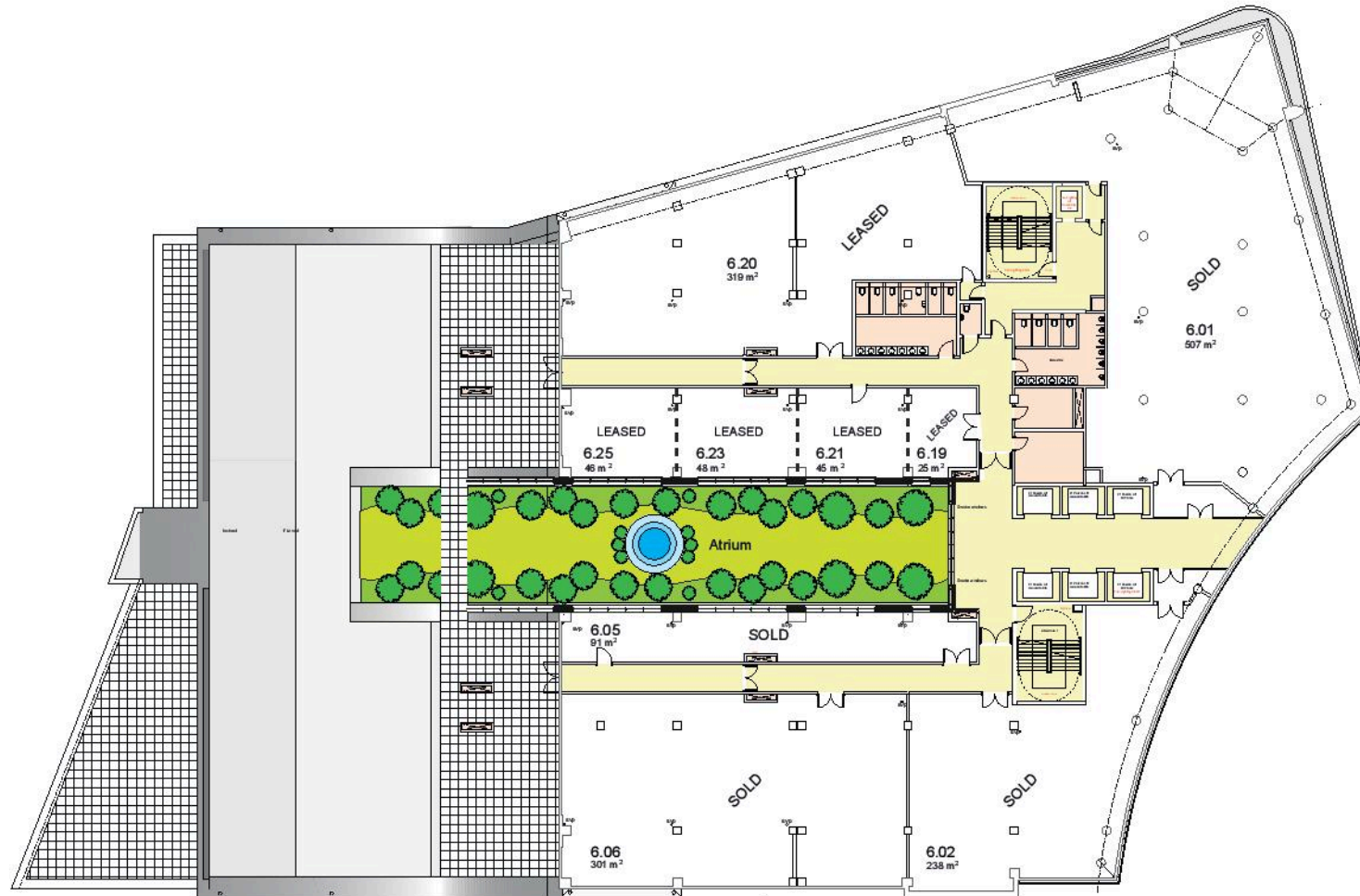
THE SIGNATURE CORPORATE ADDRESS



# WORLD TRADE CENTER® GIBRALTAR

THE SIGNATURE CORPORATE ADDRESS

## SIXTH FLOOR



### Notes:

Floor plans are accurate at the time of print. Small details may change as construction progresses.

23rd November 2017.

CHOOSE QUALITY



WORLD TRADE CENTER® GIBRALTAR  
THE SIGNATURE CORPORATE ADDRESS

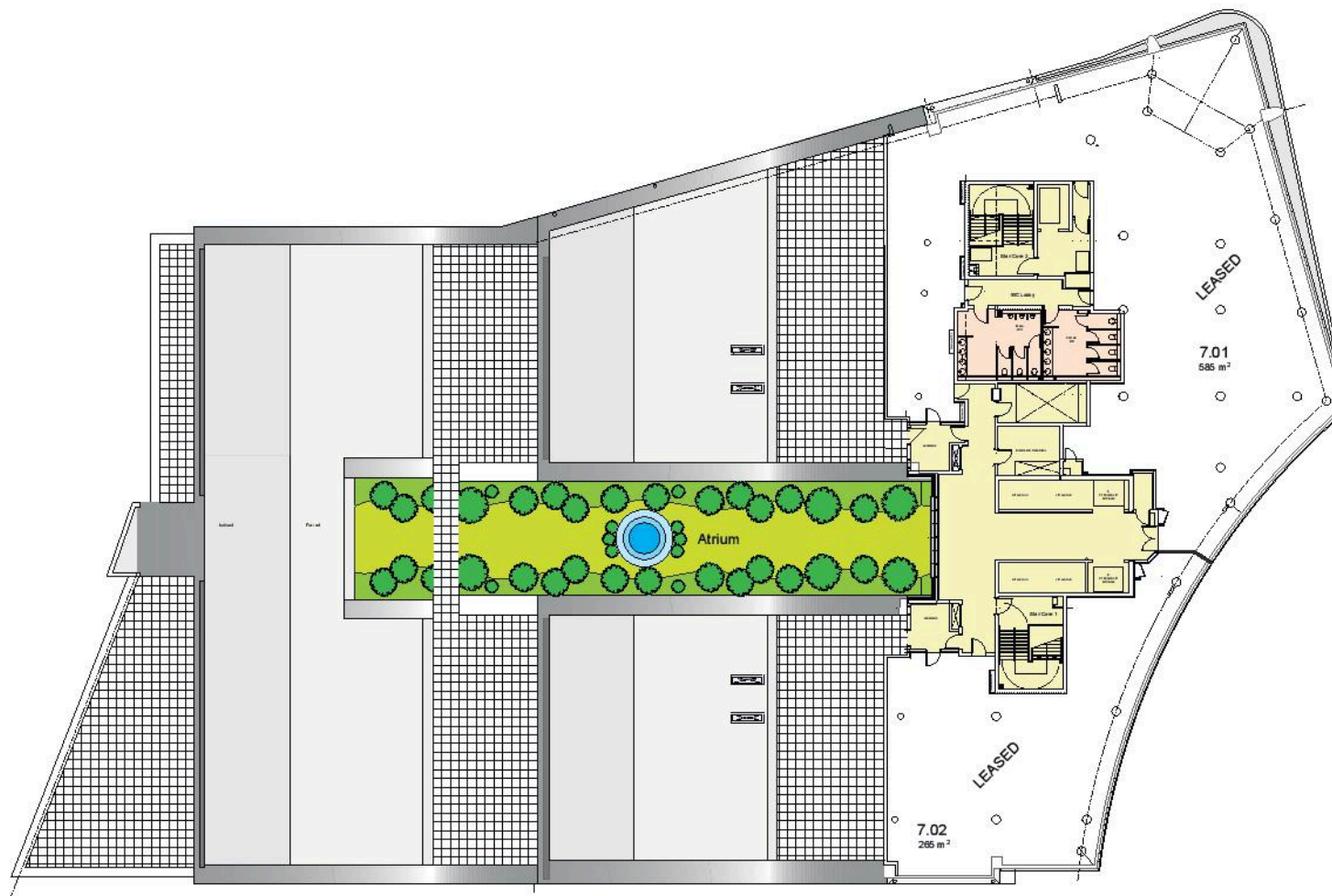




**WORLD TRADE CENTER®**  
**GIBRALTAR**

THE SIGNATURE CORPORATE ADDRESS

## SEVENTH FLOOR



### Notes:

Floor plans are accurate at the time of print. Small details may change as construction progresses.  
23rd November 2017.

**CHOOSE QUALITY**



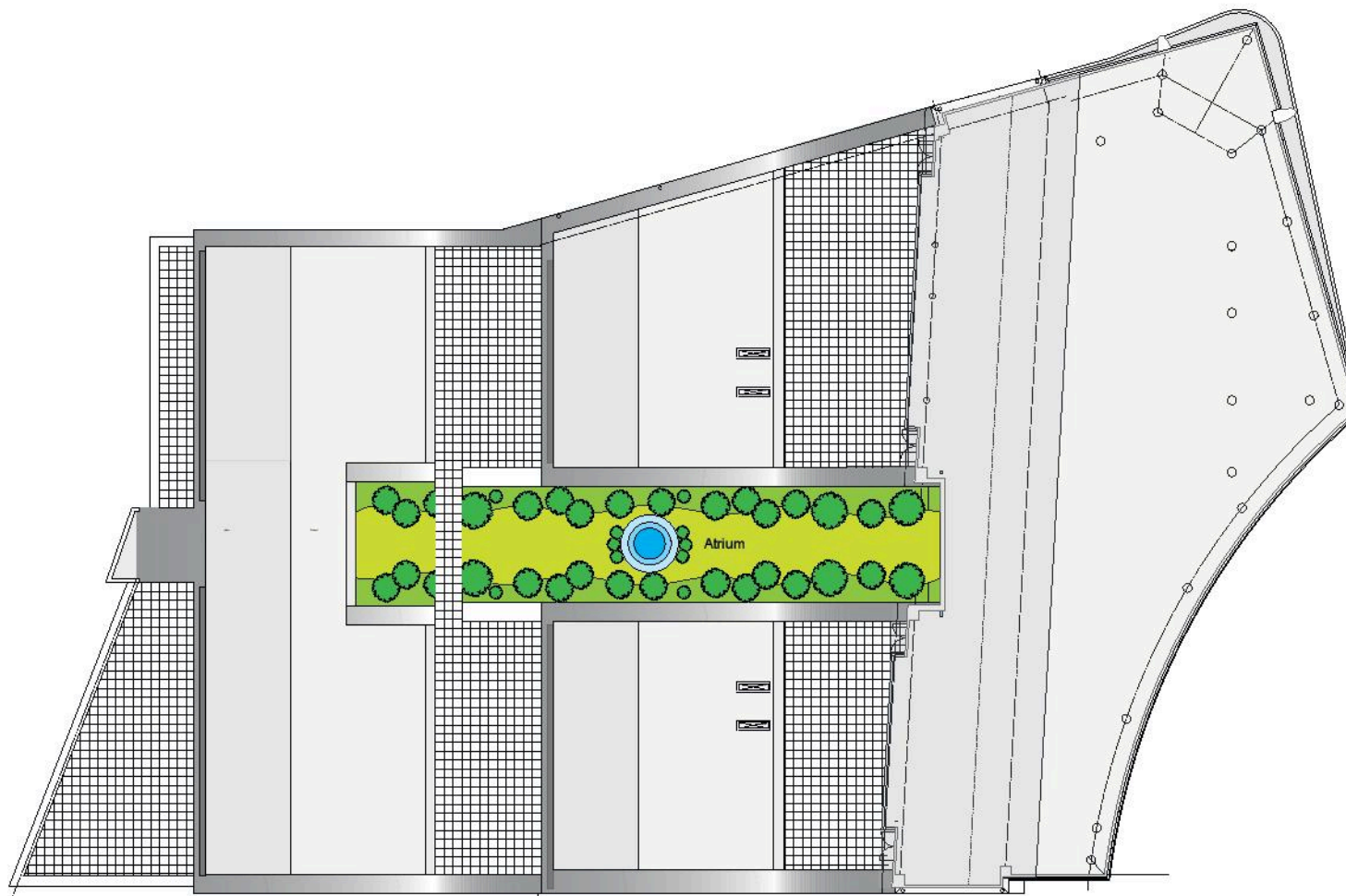
**WORLD TRADE CENTER® GIBRALTAR**  
THE SIGNATURE CORPORATE ADDRESS



**WORLD TRADE CENTER®**  
**GIBRALTAR**

THE SIGNATURE CORPORATE ADDRESS

## EIGHTH FLOOR



### Notes:

Floor plans are accurate at the time of print. Small details may change as construction progresses.

23rd November 2017.

**CHOOSE QUALITY**



**WORLD TRADE CENTER® GIBRALTAR**  
THE SIGNATURE CORPORATE ADDRESS



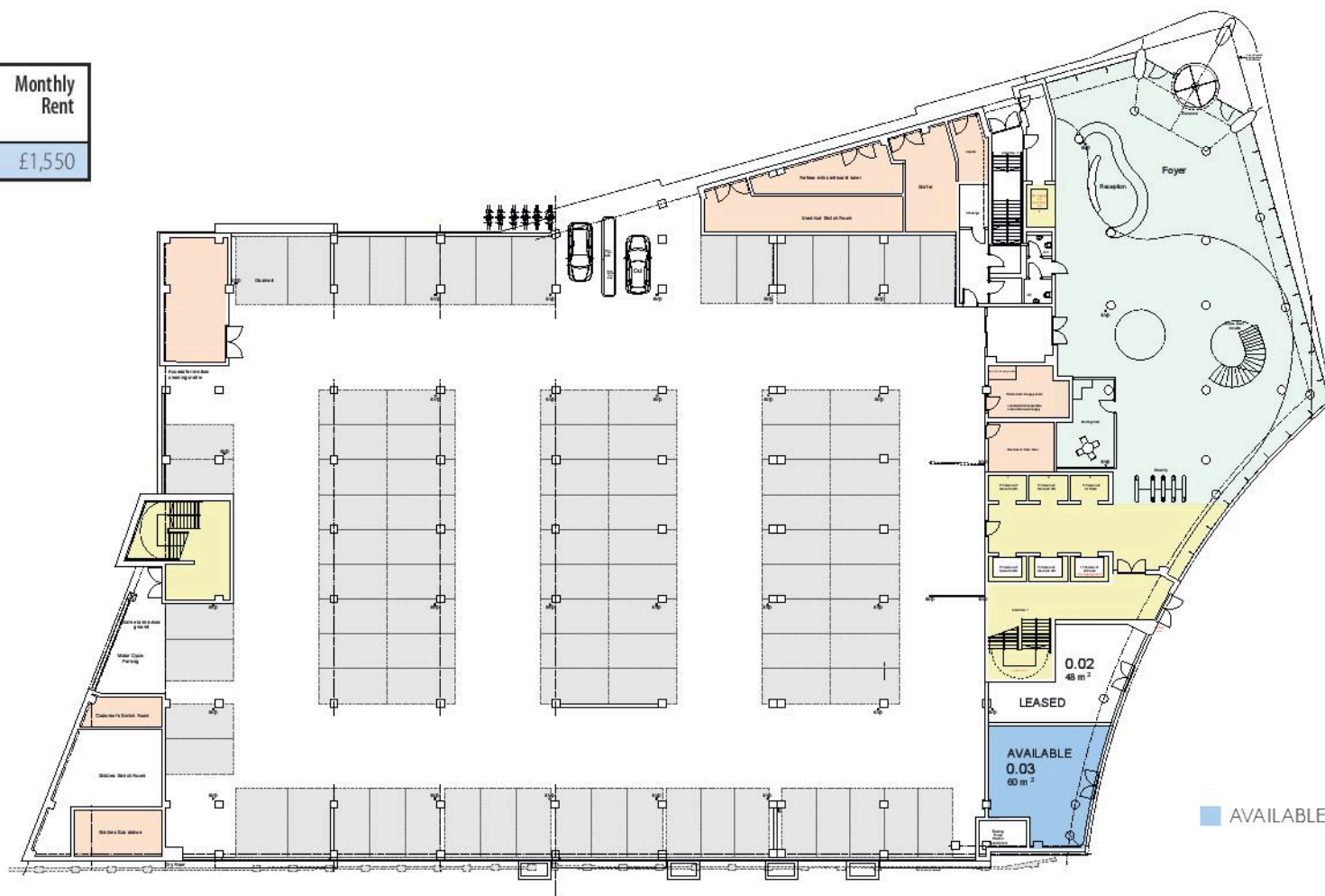


# WORLD TRADE CENTER® GIBRALTAR

THE SIGNATURE CORPORATE ADDRESS

## GROUND FLOOR

Unit Number	Unit Size m <sup>2</sup>	Total Annual Base Rent (ABR)	Monthly Rent
0.03	60	£18,600	£1,550



### Notes:

Floor plans are accurate at the time of print. Small details may change as construction progresses.  
23rd November 2017.

CHOOSE QUALITY



WORLD TRADE CENTER® GIBRALTAR  
THE SIGNATURE CORPORATE ADDRESS